

Celebrating
Acadiana's
Music!

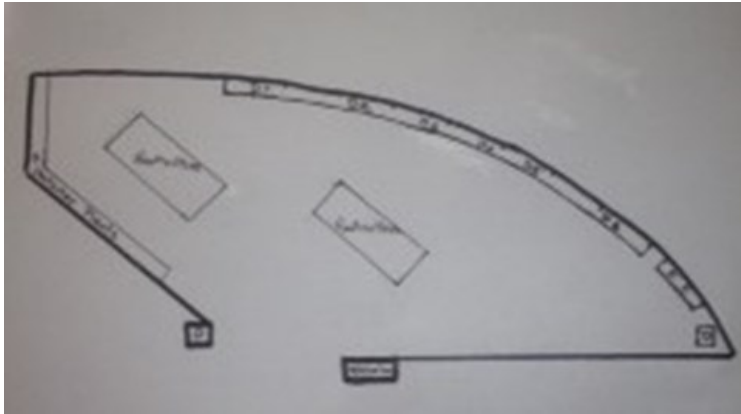
**A Standard
Flower Show
Presented by the
Lafayette Garden Club**

April 1-3, 2016

**2330 Johnston St
Lafayette, LA**



Floor Plan of Exhibit Area



Acknowledgement:

Many thanks to my friend, Connie Hibbeler,
for playing with me in the gardens of musical terms!

Lafayette Garden Club

Member of

National Garden Clubs, Inc.

Deep South Region

Louisiana Garden Club Federation, Inc.

District III

Presents

A Standard Flower Show

Celebrating Acadiana's Music!

April 1-3, 2016

**In Conjunction with
Festival des Fleurs de Louisiane
at Blackham Coliseum
2330 Johnston Street
Lafayette, Louisiana
337-482-5339**

Admission: \$5.00

Open to the Public

Saturday, 9:00 a.m. to 4:00 p.m.

Sunday, 9:00 a.m. to 4:00 p.m.

Table of Contents

Show Chairs and Committees..... 3

General Rules.....4-5

Standard System of Awards.....5-6

Division I – Horticulture.....6

 Rules for Horticulture.....6-7

 Awards for Horticulture.....8-9

 Exhibit Categories for Horticulture10-14

Division II – Design.....15

 Rules for Design.....15-16

 Awards for Design.....16-17

 Exhibit Categories for Design.....18

Division III – Special Exhibits19

 Rules for Special Exhibits.....19

 Awards for Special Exhibits19

 Exhibits.....19

Floor Plan of Exhibit Area.....20

Acknowledgement.....20

Division III Special Exhibits

Celebrating Musical Environment!

RULES FOR SPECIAL EXHIBITS

General Rules that apply to Special Exhibits must be observed.

AWARDS FOR SPECIAL EXHIBITS

AWARD OF APPRECIATION Exhibits are non-competitive; each exhibit is eligible for this award, represented by a rosette of orchid ribbons. It may be presented, if merited, to the members and/or persons displaying an educational exhibit. (Handbook, pages 53-54)

EXHIBITS

Exhibitors have complete freedom in display of materials, but must provide a niche or other background; exhibit is to be set on a provided table with a black underlay within a space 48”high, 36”wide, and 30”deep.

Exhibit 1. *The Work of Bees*

Visual materials, including pictures and displays, will feature the benefits that bees are to our environment.

Exhibit 2. *Plants and Household Products as Pesticides*

Samples of useful plants and products will be displayed and linked to the pests that avoid them!

**Section A: DESIGNS ELIGIBLE FOR A DESIGNER'S CHOICE
AWARD**

Celebrating Favorite Genre!

Exhibitor has total freedom in selection of plant materials and components. Plant material may be fresh or dried. Design types are specified by Class; please refer to the Handbook for specifics of design types. (There will be four entries in each class.)

Class 1. Cajun-Zydeco (Plaque Design. Handbook, page 206.)

Class 2. Country (Still Life Design. Handbook, page 209.)

Class 3. Rock 'n Roll (Synergistic Design. Handbook, page 210.)

Section B: DESIGNS ELIGIBLE FOR A TRI-COLOR AWARD

Celebrating Popular Performance Types!

Exhibitor may use a selection of only fresh plant materials and non-plant components. Design types are specified by class; please refer to the Handbook for specifics of design types. (There will be four entries in each class.)

Class 4. Gospel (Multi-Rhythmic Design. Handbook, page 205.)

Class 5. Jazz (Reflective Design. Handbook, page 207.)

Class 6. Classical (Traditional Line Design. Handbook, page 182.)

Show Chairs and Committees

Honorary Chair...Betty Foret, President..942-6423
General Chair...Margaret Hargroder...278-0698
Co-Chairs...Betty Foret, Cecille Revels
Schedule Chair...Margaret Hargroder...278-0698
Staging Chair...Diana Nolan...981-1071
Marilyn Duhe, JoAnn Pugh, Jean Bonneau,
Roxanna Champagne, Mary Ann Armbruster,
Eleanor Henry, Madelyn Hoyt, Cathy Andrew
Theme Staging...Margaret Hargroder, Jeanne Latiolais
Horticulture Chair...Loraine Newberry...837-6328
Entries...Jan Vinning...984-5190
Dean Kopfler, Loraine Allain
Classification...Glenda Balliviero...235-6937
Consultant...Loraine Newberry...837-6328
Placement...Diana Nolan...981-1071
Marilyn Duhe, Manda Harson
Design Chair...Cecille Revels...235-2728
Entries...Margaret Hargroder...278-0698
Classification...Angel Landry...315-1034
Placement...Angel Landry...315-1034
Consultant...Betty Foret...942-6423
Special Exhibits...Cynthia Risinger...269-9697
Clerks Chair...Angel Landry...315-1034
Jeannie Richard, Page Salley, Maggie Chaisson
Awards Chair...Roxanna Champagne...984-2538
Kathy VanNess, Debbie Grissom
Judges Chair...Cecille Revels...235-2728
Publicity Chair...Henrietta Boriskie...856-6201
Photography...Norman Balliviero...781-5637
Special Invitations...Betty Foret...942-6423

GENERAL RULES

THE RULES MUST BE READ CAREFULLY, as the Classification Committee will reserve the right to disqualify entries which do not meet schedule requirements.

1. Entries in the Design Division are open to all Federated Garden Club members and must be pre-registered by the Design Entries Chair. The Horticulture Division is open to all interested gardeners.
2. Entries in all divisions will be received in the exhibit area on Friday, April 1, beginning at 7 a.m. and must be received no later than 11:00 a.m. on that date. Late entries may be displayed, but will not be eligible for competition.
3. Judging will be strictly in accordance with the rules of the National Garden Clubs, Inc. (NGC) for the Standard Flower Show as stated in the 2007 Handbook of Flower Shows (as revised) and from hereon referred to as the Handbook. Any changes printed in the *National Gardener* will apply. The decision of the judges will be final; awards may be withheld when no exhibit warrants one.
4. There must be emphasis on fresh plant material. No artificial plant material can be used in any division.
5. The Lafayette Garden Club will do everything possible to protect personal property, but the club cannot be held responsible for accidental injury or breakage.
6. Exhibitors must leave the area on April 1 by 11:00 a.m. so that the Placement Committee can check that entries are properly and visibly located and entry cards completed, and the Classification Chairs can fulfill their requirements to check and initialize entries as conforming to schedule. Judging will begin at 11:30 a.m.
7. No persons (except Judges, the Show Chair and Co-Chairs, the Chair of Judges, Classification Chairs, and Clerks) will be al-

SECTIONAL AWARDS These may be awarded to an exhibit scoring 95 or above in sections having a minimum of three classes, with 4 exhibits in each, as long as there are 12 or more exhibits.

DESIGNERS CHOICE AWARD One award, represented by a rosette of purple ribbons, may be given to a design in Section A. Exhibitor has complete choice of materials, assuming some plant material is included. (Handbook, pages 47-48)

TRICOLOR AWARD One award, represented by a rosette of red, blue, and yellow ribbons, may be given to an entry in Section B. All plant material used in the design must be fresh. Decorative wood is never permitted; however, non-plant material may be included but may not dominate. (Handbook, pages 46-47)

EXHIBIT CATEGORIES FOR DESIGN

All designs must be set within an area 36 inches high, 32 inches wide, and 20 inches deep on a provided table, which will have a black covering and a black curtain backdrop. An additional backdrop or underlay is optional and may be provided by the designer.

Other allowances and requirements are specified by section and class. (For references, consult the "Handbook for Flower Shows" as revised 2007 or National Garden Club book, "Designing by Types" by Harriet Osborne.)

10. The term "fresh plant material" means any part severed from a living plant with freshness generally unimpaired and unchanged. Fresh plant material **MUST NOT** be painted, tinted, or treated.

11. A list of all materials used **MUST BE INCLUDED** on a 3 X 5 card. A brief explanation may be written on this same card.

12. All entries must be cleared by the Classification Chair, who will initial the entry card once it is determined that the entry fits the criteria of the Section and Class in which it is entered.

13. Backdrops, underlay material, and accessory objects may be provided by the exhibitor.

14. The Official American flag and other national flags are not permitted to be used within any design in a Standard Flower Show. Furthermore, the use of any official national flag as an underlay, background, skirting, draping, etc. is also prohibited throughout all divisions of the Standard Flower Show.

15. Taxidermal representation from the animal kingdom, e.g. mammals, birds, fish, etc., is prohibited in competitive designs in a Standard Flower Show, but other such items that simulate animals or birds, for example, that are crafted as toys or decorative items are allowed.

AWARDS FOR DESIGN

(These may be awarded to an exhibit scoring 95 or above as long as there are 12 exhibits.)

SWEEPSTAKES AWARD One award, represented by a rosette of green and white ribbons, may be presented to the member receiving the most design blue ribbons (two or more). Lesser ribbons will be counted to break a tie, then, if needed, Top Awards in the Design Division. (Handbook, page 54)

AWARD OF DESIGN EXCELLENCE One award, represented by a rosette of gold ribbons, may be awarded to the highest scoring exhibit in the entire Design Division. (Handbook, page 45)

allowed on the floor during judging. Classification Chairs should remain available to the judges.

8. Entries may only, and must, be removed between 3:30 p.m. and 4:30 p.m., Sunday, April 3. Blue ribbon winners in all divisions are asked to report for photographs at 3:00 p.m. on that day.

9. Louisiana Conservation plants may not be exhibited in the show except in the Special Exhibits, where they must be displayed with their own roots and labeled with both botanical and common names.

10. Plants on the Louisiana native plant list may be used if garden grown or gathered with conservation in mind. They must be botanically named and entered in the Native Plants section of the Horticulture Division.

11. Rules for ribbons and top awards will be in accordance with the rules of the show and the 2007 Handbook for Flower Shows (as revised).

12. In the event Student Judges are participating in this Flower Show, judges are required to review all classes they have judged to determine if any exhibit that received less than a blue ribbon (first place) would merit a point score of 90+.

Standard System of Awards

FOR ALL COMPETITIVE AWARDS IN ALL DIVISIONS, the NGC standard system of awards will be used. Only one blue, one red, and one yellow ribbon may be awarded in each class (or sub-division class).

First Place: Blue Ribbon Must score 90 or above.

Second Place: Red Ribbon Must score 85 or above.

Third Place: Yellow Ribbon Must score 80 or above.

Honorable Mention: White Ribbon Must score 75 or above.
Where merited, one or more white ribbons may be given.

All exhibits not having won a blue ribbon, but judged as 90 or above, will be identified on the entry card as 90+ and signed by the participating judge.

FOR ALL DESIGNS, The SCALE OF POINTS, (Handbook, page 303) with a total of 100, will include

a) Conformance (to schedule requirements)	14
b) Design (Elements, Principles)	48
c) Artistic concept (selection and organization)	12
d) Expression (interpretation of class by exhibitor)	10
e) Distinction (marked superiority in all respects)	16

DIVISION I – HORTICULTURE

Celebrating Symphony!

RULES FOR HORTICULTURE

1. All General Rules that apply to the Horticulture Division must be observed.
2. Horticulture entries are limited to 15 entries per person. Each exhibitor may make multiple entries under each class as desired, provided each entry is of a different cultivar, color, or type. Each exhibitor is responsible for entry of his/her own specimens.
3. All entry cards must be completed, as much as possible, in advance and in pencil. Cards may be obtained from Jan Vining at two prior club meetings. In the event of

DIVISION II - DESIGN

Celebrating Genre and Performance Types!

RULES FOR DESIGN

1. All General Rules that pertain to the Design Division must be observed.
2. All entries in this Division must be pre-registered with the Entries Chair. If the exhibitor is unable to exhibit after accepting, it is her/his responsibility to provide a substitute and notify the Entries Chair.
3. Plant material used in designs need not be grown by the exhibitor.
4. Fresh plant material may not ever be treated in any matter.
5. No artificial flowers, foliage, fruit, or vegetables are permitted.
6. The design must be the work of one individual.
7. Plant materials used in the designs may be fresh and/ or dried as specified by class.
8. Plant material does not have to dominate any section.

The following are permitted without schedule approval:

- a. Accessories, featured objects.
 - b. Treating and/or painting of dried plant material.
 - c. Contrived flowers and other forms made of REAL PLANT MATERIAL, fresh or dried.
 - d. Cut fruits or vegetables (must be sealed unobtrusively to discourage insects, odor, and discoloration).
 - e. Living plants with roots attached, e.g. leek, bromeliad, moss.
9. The exhibitors must keep their exhibits in good condition for the duration of the show.

Section I - CUT ORNAMENTAL FOLIAGE (Eligible for Award of Merit)

Celebrating the Harmonica with its colorful presence!

Decorative foliage cut from non-woody plants. May be ground- or container-grown. A complete, natural blade and/or stem, not to exceed 36". One stem only.

Class 24. Aroids (one leaf)

Class 25. Coleus

Class 26. Ferns (garden grown - one frond)

Class 27. Palms (garden grown - one frond)

Class 28. Any Other Worthy, Herbaceous, Decorative Foliage
Exception-No Aspidistra

Section J – COLLECTIONS (Eligible for Collectors Showcase Award)

Celebrating the Saxophones with their diverse range!

Collections must consist of at least five different cut specimens, or five different container grown plants, or groupings of fruits or nuts.

Class 29. Cut Specimens

Class 30. Potted Specimens

Section K - CULTIVATED NATIVE PLANTS

Celebrating the Accordion with its native prominence!

Class 31. Annuals, Perennials, Biennials

Class 32. Shrubs and Trees (maximum 30", minimum 6" -to include 5 nodes)

Class 33. Blooming Vines (maximum 24")

classification questions, assistance will offered by the Horticulture and/or Classification Chair prior to the day of exhibit and at the time of entry.

4. Only plain, colorless glass bottles will be permitted. No labels, embossed, or decal product names on bottles will be accepted. Exhibits are to be shown in bottles suitable for the size of the cut specimen. Exhibitor may supply clean bottles, but bottles will be available at the entry area of the show.

5. All plant material must be fresh and have been grown by the exhibitor, in exhibitor's possession for at least three months , or grown from seed. (Exception: orchids must have been in exhibitor's possession for at least one year and multiple/combo plantings for six weeks and growing together for six weeks.)

6. All horticulture specimens MUST be fresh and deemed show worthy by the Horticulture Entries Chair and committee.

7. All entries are to be labeled by genus, species, and/or variety. Common names may also be given.

8. All container-grown plants must be properly groomed and exhibited in clean containers, color and size in harmony with the plant. Containers may be pots, baskets, hanging containers, weathered wood, or other material suitable to the size and type of plant. Maximum size for container is 12". Double potting is permitted, as long as inner pot is not visible.

9. Cut specimens of shrubs, vines, and trees must be terminal growth and must be within length limits specified in schedule.

10. No dressing or oiling of foliage will be permitted.

11. Wedging is permitted in the neck of the horticulture container to improve pose of specimen. Wedging may be visible, but must not detract from the cut specimen. The "plug" MUST be of a stem or sprig matching the specimen.

12. All collection exhibits MUST be pre-registered by March 30 with the Horticultural Entries Chair, who then notifies the Staging Chair for placement planning. The exhibitors of collections are to place their own exhibits for judging.

13. The Classification Committee reserves the right to subdivide or combine classes where exhibits warrant by genus, species, cultivar or color.

14. Horticulture entries will first be cleared by the Classification Committee then registered with the Entry Committee. The entry will then be turned over to the Placement Committee which will be responsible for proper placement of each entry.

15. The Horticulture Scales of Points, pages 297-302 in the Handbook for Flower Shows, may serve as guides.

AWARDS FOR HORTICULTURE

(These may be awarded to an exhibit scoring 95 or above, as long as there are 20 exhibits.)

DIVISION AWARDS A Horticulture Division Award may be awarded to an exhibit meeting all General Award Requirements as stated in Handbook, pp. 41-42 and consist of 20 or more exhibits in competition.

The **AWARD OF HORTICULTURE EXCELLENCE** may be awarded to the exhibit judged as finest in the entire Horticulture Division. The specimen must be correctly botanically named. It is represented by a rosette of green, orange and blue ribbons. (Handbook, page 43)

SECTIONAL AWARDS These may be awarded to an exhibit scoring 95 or above in sections having a minimum of three classes, but no minimum number of entries. No section is eligible for more than one sectional Top Exhibitor Award.

Class 16. Non-Flowering, or without fruit or berries

Class 17. Dwarf

a. **Flowering, Fruiting, or with Berries** (At time of show)

b. **Non-Flowering, or without fruit or before berries.**

Section G – TREES (Eligible for the Arboreal Award)

Celebrating the Upright Bass with its solidarity!

One stem from non-herbaceous (woody) plants that usually branch. Must be terminal growth from 12" to 30" in length, 6" to 12" for dwarf, and generally should include several nodes.

Class 18. Flowering, Fruiting, or with Berries (MUST have flower, fruit or berry at time of show.)

Class 19. Non-Flowering, or without fruit or berries

Class 20. Dwarf

a. **Flowering, Fruiting, or with Berries** (MUST have flower, fruit or berry at show)

b. **Non-Fruiting, Flowering, or with Berries**

Section H – VINES (Eligible for Award of Merit)

Celebrating the Triangles with their intertwining tones!

Length not to exceed 24"

Class 21. Flowering and Fruiting

Class 22. Non-Flowering or Fruiting

Class 23. Decorative Foliage

Section D - BULBS, CORMS, RHIZOMES, & TUBERS

Celebrating Trumpets with rising notes!

Stem length should be proportionate to flower size. Consult Handbook regarding specimens that must have foliage attached.

Class 7. Iris

Class 8. Hemerocallis

Class 9. Any Other

Section E - ROSA (Roses) (Eligible for Award of Merit)

Celebrating Violins in melodious solo!

One stem or spray with attached foliage according to variety. See Handbook (pp. 147-148) as to whether grown disbudded or natural.

Class 10. Hybrid Teas

Class 11. Grandiflora or Floribunda

Class 12. Old Garden Roses - Shrubs

Class 13. Miniatures

Class 14. Any Others

Section F – SHRUBS (Eligible for the Arboreal Award)

Celebrating the Piano with its structure in music!

One stem from non-herbaceous (woody) plants that usually branch. Must be terminal growth from 12" to 30" in length, 6" to 12" for dwarf, and generally should include several nodes.

Class 15. Flowering, Fruiting, or with Berries (At time of show.)

a. Viburnum

b. Bottle Brush

c. Other

FOUR AWARDS OF MERIT, represented by an orange rosette, may be given, if merited, to the finest blue ribbon specimen, in each of the following Sections: A (Container-grown Plants), C (Perennials), E (Roses), H (Vines), & I (Cut Ornamental Foliage). Specimens must be correctly botanically named. (Handbook, page 43)

TWO ARBOREAL AWARDS, represented by a rosette of two shades of green ribbon, may be given, if merited to the outstanding entry in each of the following sections, Section F (Shrubs) and Section G (Trees). It must be correctly, botanically named and have earned a blue ribbon. (Handbook, pages 43-44)

A COLLECTORS SHOWCASE AWARD, represented by a rosette of brown and green ribbons, may be given to outstanding entry in Section J. Each specimen within an exhibit must be different and must score 95 or more and meet all General and Horticulture rules. It must be correctly, botanically named. (Handbook, pages 44-45)

GROWERS CHOICE AWARD, represented by a rosette of dark green ribbons, may be awarded to as many as 3 of the highest scoring exhibits if eligible. Sections/classes are designated in the schedule and all other General and Horticulture Award Requirements have been met. Classes in each eligible section must have some common characteristic, e.g. Flowering Container Grown, Foliage Container Grown and/or Combination Planting.

A SWEEPSTAKES AWARD, represented by a rosette of green and white ribbons, may be presented to the member receiving the most horticulture blue ribbons. Lesser ribbons will be counted to break a tie and then Top Awards in the Horticulture Division if required. (Handbook, page 54)

EXHIBIT CATEGORIES FOR HORTICULTURE

Celebrating Symphony Instruments!

Section A - CONTAINER-GROWN PLANTS (Eligible for one Growers Choice Award)

Celebrating Drums in their flexible roles!

Plants may be mounted on boards or on weathered wood, grown in baskets, hanging container, on osmunda, in pots, or in terrariums. Maximum container size is 12", inside diameter. Maximum board or weathered wood length is 30 inches. Container grown plants may be shown as single crowns, self-multiples or multiple plants. African violets must be shown with one crown; trailing types, with at least three crowns growing from a central stem.

Class 1. Single Genus Plants

- a. **Bromeliads**
 - 1) **Single Specimen Plant**
 - 2) **Self-Multiples**
- b. **Other Flowering Plants**
- c. **Ferns**
- d. **Foliage Plants**
- e. **Cacti and other Succulents**
 - 1) **Single Specimen Plant**
 - 2) **Self-Multiples**
- f. **Any Other**

Class 2. Multiple Genus Plantings

Section B - ANNUALS & BIENNIALS

Celebrating Cymbals with their emphatic presence!

(No foliage allowed, except that attached to the stem.)

Class 3. Any Worthy Flowering Annual & Biennial

- a. **Large** (3" or above-one stem)
- b. **Small** (up to 3" - three stems)
- c. **Spray** (one stem)

Class 4. Any Worthy Non-Flowering Annual & Biennial

- a. **Large** (3" or above-one stem)
- b. **Small** (up to 3" - three stems)
- c. **Spray** (one stem)

Section C – PERENNIALS (Eligible for Award of Merit)

Celebrating Guitars with their continuous return!

(Exception: Camellias and Hibiscus must be shown with a 1" stem in a flat pan or small cup.)

Class 5. Flowering Perennials

- a. **Large** (3" or above-one stem)
- b. **Small** (up to 3" - three stems)
- c. **Spray** (one stem)

Class 6. Non-Flowering Perennials

- a. **Large** (3" or above-one stem)
- b. **Small** (up to 3" - three stems)
- c. **Spray** (one stem)